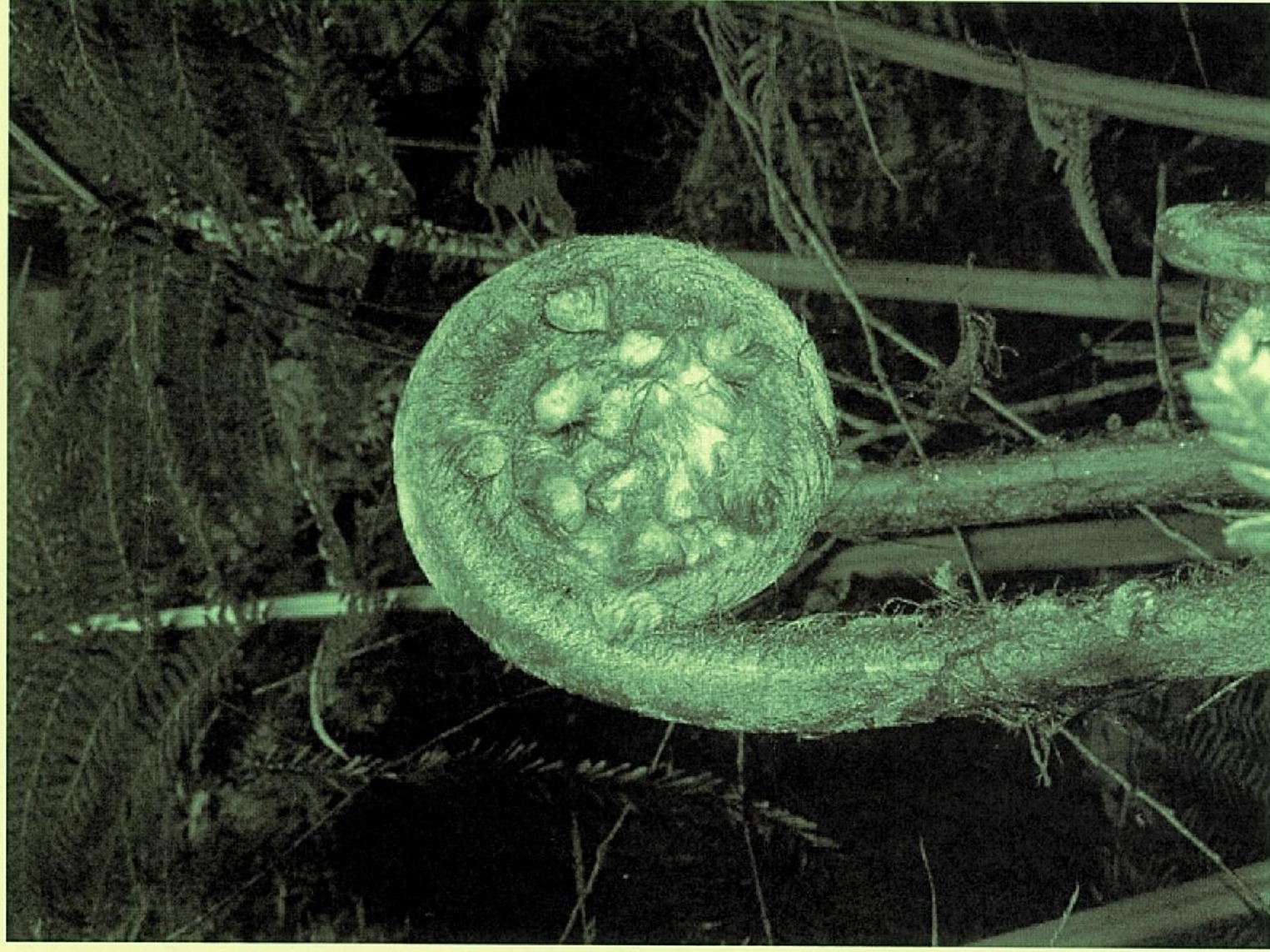


FERN SOCIETY OF VICTORIA

NEWSLETTER

Volume 32, Number 6

November/December 2010



NEWSLETTER

If undeliverable return to:
Fern Society of Victoria Inc.
PO Box 45, Heidelberg
West, Victoria 3081,
Australia

ABN 85 086 216 704
print post approved
PP334633/0002
SURFACE MAIL

Postage Paid
West Heidelberg
Victoria 3081
Australia

MRS K C STOCKS

P.O. Box 1531

BATEMANS BAY NSW

2536

Fern Society of Victoria Inc.

ABN 85 086 216 704

mail: PO Box 45, Heidelberg West, Victoria 3081, Australia

email: barry_white1@msn.com.au

web: <http://home.vicnet.net.au/~fernsvic/>

Objectives of the Fern Society of Victoria

To bring together persons interested in ferns and allied plants

To promote the gathering and dissemination of information about ferns

To stimulate public interest in ferns

To promote the conservation of ferns and their habitats

Office bearers

President	Barry Stagoll	9844 1558	mirra@iimetro.com.au
Vice President	Don Fuller	9306 5570	
Secretary	Barry White	9740 2724	barry_white1@msn.com.au
Treasurer	Don Fuller	9306 5570	
Spore Bank Manager	Barry White	9740 2724	barry_white1@msn.com.au
Librarian	Mirini Lang	9886 6109	
Editor	Robin Wilson	9597 0742	rwilson@museum.vic.gov.au
Committee members	Mirini Lang 9886 6109, Gay Stagoll 9844 1558, Brenda Girdlestone 9390 7073, Warren Simpson 0419 594 524,		

Subscriptions

Single	\$17.00	Opinions expressed in this Newsletter are the personal views of the authors and are not necessarily endorsed by the Society, nor does mention of a product constitute endorsement.
Pensioner/student	\$14.00	
Family	\$19.00	
Pensioner family	\$16.00	
Overseas	\$25.00 (overseas subscription payments by international bank cheque in \$Aus, by airmail please)	

Subscriptions fall due on 1 July each year

Meeting venues

The Kevin Heinze Garden Centre, 39 Wetherby Road, Doncaster [Melway 47 H1]

Other meetings as advertised in this Newsletter

Timetable for evening general meetings

7:30 Pre-meeting activities – sale of ferns, spore, books, merchandise and special effort tickets. Also library loans and lots of conversation.

8:00 General meeting

8:15 Workshops and demonstrations

9:15 Fern identification and pathology, special effort draw

9:45 Workshops and demonstrations

10:00 Close

Fern Society of Victoria Spore Bank

Fern spore is free to members of the Fern Society of Victoria who donate spore. Otherwise the cost is members 20 cents per sample, non-members 50 cents, plus \$1.00 to cover postage and handling. Available at meetings or by mail from Barry White, 34 Noble Way, Sunbury, Vic. 3429 Australia, Ph. (03) 9740 2724. There is no charge for spore for overseas members, however to cover postage two International Reply Coupons would be appreciated; or alternatively spore may be exchanged. International Reply Coupons can be purchased at most Post Offices. Overseas non-members may purchase spore at three packets for each International Reply Coupon, plus two coupons per order to cover postage and handling. Alternatively spore

<i>Acrostichum speciosum</i> 4/09	<i>Cyathea cunninghamii</i> /07	<i>Platyserium superbum</i> 4/08
<i>Adiantum formosum</i> 3/08	<i>Cyathea felina</i> 10/08	<i>Platyserium velichii</i> 10/07
<i>Adiantum pedatum</i> 2/07	<i>Cyathea gleichenioides</i> 2/07	<i>Plesioneuron tuberculatus</i> 12/08
<i>Amphineuron opulentum</i> 4/09	<i>Cyathea incisoserata</i> /07	<i>Pneumatopteris sogerensis</i> 12/08
<i>Anemia tomentosa</i> 8/08	<i>Cyathea intermedia</i> 2/07	<i>Pneumatopteris costata</i> 12/08
<i>Arachniodes simplicior</i> 1/09	<i>Cyathea lunulata</i> /07	<i>Polypodium formosum</i> 10/07
<i>Asplenium aethiopicum</i> 12/07	<i>Cyathea medullaris</i> 11/08	<i>Polystichum formosum</i> 6/09
<i>Asplenium australasicum</i> 1/08	<i>Cyrtomium falcatum</i> 'Butterfieldii' 3/08	<i>Polystichum proliferum</i> 11/08
<i>Asplenium nidus</i> 5/08	<i>Dicksonia antarctica</i> 8/08	<i>Polystichum retro-paleacum</i> /08
<i>Asplenium nidus</i> cv. 5/08	<i>Dicksonia fibrosa</i> 10/07	<i>Polystichum setiferum</i> 'Congestum' 12/07
<i>Alhyrium filix-femina</i> (red stripe) 12/08	<i>Diplazium australe</i> 4/08	<i>Polystichum vestitum</i> 2/07
<i>Alhyrium niponicum</i> 'Picium' 2/08	<i>Doodia australe</i> 12/08	<i>Polystichum xiphophyllum</i> 3/08
<i>Blechnum ambiguum</i> 1/08	<i>Dryopteris affinis</i> 'Cristata' /08	<i>Pronephrium asperum</i> 2/07
<i>Blechnum braziliense</i> 3/08	<i>Dryopteris wallichiana</i> 1/09	<i>Pteris denata</i> 1/09
<i>Blechnum charberstii</i> 9/07	<i>Hypolepis glandulifera</i> 12/08	<i>Pteris</i> sp. (Nepal) 3/07
<i>Blechnum flaviatile</i> 9/07	<i>Hypolepis rugosula</i> 2/07	<i>Pteris umbrosa</i> /08
<i>Blechnum gregsonii</i> 4/09	<i>Lastreopsis acuminata</i> 12/08	<i>Rewatitsii fragile</i> 12/08
<i>Blechnum spicant</i> 7/08	<i>Lastreopsis decomposita</i> 6/09	<i>Rumohra adiantiformis</i> (Cape form) 2/08
<i>Blechnum watarii</i> 12/08	<i>Lastreopsis glabella</i> 4/07	<i>Sphaerostephanos heterocarpus</i> 7/08
<i>Clingia australis</i> 12/08	<i>Lastreopsis marginans</i> 1/07	<i>Stenochlaena palustris</i> 2/07
<i>Christella parasitica</i> 4/09	<i>Microsorium punctatum</i> 1/09	<i>Thelypteris novaezensis</i> 1/07
<i>Christella subpubescens</i> 12/08	<i>Nephrolepis falcata</i> 3/08	
<i>Cibotium schiedeii</i> 1/07	<i>Ophioglossum pendulum</i> 7/08	
<i>Cyathea australis</i> 4/08	<i>Pellaea cordata</i>	
<i>Cyathea baileyana</i> 12/08	<i>Pellaea sagittata</i> 3/07	
<i>Cyathea brownii</i> /07	<i>Pellaea viridis</i> 1/08	
<i>Cyathea cooperi</i> 1/09	<i>Platyserium bifurcatum</i> 'Hula Hands' 10/07	
<i>Cyathea cooperi</i> (blue stripe) 1/07	<i>Platyserium bifurcatum</i> 'Venosum' (Mt. Lewis)	
<i>Cyathea cooperi</i> 'Brenwood' 3/08	10/07	

Thank you to the following spore donors: Marco Calvimonte, Brenda Girdlestone, Don Fuller, Warren Simpson, Nada Sankowsky, Sheila Tiffin, Werner Neumeuller, Frank Hardung, Kylie Stocks, Neville Crawford, Wendy Johnston, Claire Shackel, Dot Camp, and Crosby Chase.

The above list was current as of June 2009. Updates can be found at <http://home.vicnet.net.au/~fermsvic/Sporlist.html>.

Next Meeting

Thursday 18 November 2010, 7:30 pm

Kevin Heinz Centre

Ken Harris: Plants of Morwell National Park

fern competition: Victorian fern

See Presidents Note, page 4, and page 14 for details of the **FSV Christmas party, to be held starting 11:30 am on Sunday 5 December 2010**, and for the first meeting next year, to be held on Thursday 19 February 2011.



Above: The group gathers for lunch at the start of the Fern Society of Victoria excursion to Badger Weir Park, Sunday 19 September 2010. Photo: Barry Stagoll.

Cover image: Treefern crozier, Badger Weir Park. Photo: Steve Meacher, Healesville Environment

Calendar of activities November 2010 - February 2011

7:30 pm, Thursday 18 November 2010

Kevin Heinz Centre

Ken Harris: Plants of Morwell National Park

fern competition: Victorian fern.

11:30 am, Sunday 5 December 2010

Kevin Heinz Centre

Christmas Breakup lunch and blind auction (please RSVP acceptances to any committee member, contact details on inside cover, see President's Note page 4)

7:30 pm, Thursday 19 February 2011

Kevin Heinz Centre

Chris Goudey: Ferns of Lord Howe Island



FSV members and visitors at Badger Weir Park excursion, August 2010. Photo: Steve Meacher, Healesville Environment Watch Inc.

President's Note

Thanks to all of you who helped to publicise the FSV excursion to Badger Weir Park, Healesville on Sunday 19th September for our 'Discovering Victorian Ferns' excursion. We had a very sociable and fruitful day in quite pleasant weather; enjoyed discovering almost all of the ferns previously recorded for the Park, and also other species which as far as we can ascertain were not officially recorded previously. The surroundings looked well after the rain we had during the cooler months this year. We were also pleased to have a very good response to the invitation we extended through a number of publicity avenues for non-members to join us and take the opportunity to learn more about ferns.

In all around 30 persons participated, around half of these being non-members. And some of the latter expressed interest in considering membership of the Society.

Last week we held the 2010 Annual General Meeting of the Society, followed by members' fern sales. A large number of interesting and well-grown ferns (and a few other plants including orchids and succulents) were brought in for sale. Unfortunately the size of the attendance was small, and most of the plants for sale went home with their growers.

As for the AGM, there were no fresh nominations from members for Committee positions, nor any for the officer's positions.

I should mention in this regard that your FSV Newsletter Editor Robin Wilson had made me aware well before the AGM that in light of his work commitments, he finds it impractical at this

Editor's Note

Sadly I could not attend the Annual General Meeting, but as Barry has written above, I am happy to continue as editor of the newsletter next year. Please send me material that you might gather over the summer, both text and

time to assume any greater responsibilities in the FSV, and indeed he would be happy to pass the Editor's job on to another person interested in this part of the Society's workings. However, despite these work commitments Robin had indicated that, although he has been finding it difficult to attend meetings, he's prepared to continue to shoulder the responsibility for the newsletter pending a successor becoming available. I'm sure that readers will agree that he has been doing a fine job with the publication, and on your behalf I thank him for his willingness to persist with it.

In the absence of new nominations, all current Committee members - having advised their willingness to continue in their present roles - were reconfirmed in them for the 2010/2011 period. The meeting conveyed thanks to all for their continuing work for the Society.

I remind members that at our November meeting at KHC, Ken Harris, Convenor of the Friends Group at the Morwell National Park, will speak to us about the Park. We can expect a most interesting talk.

Please advise acceptances for the Christmas Lunch at KHC on Sunday 5th December before the closing date to assist those who will take care of the catering preparations (contact any Committee member to accept). We look forward to catching up with lots of members for the celebrations that day.

For those who won't be attending that day, on behalf of the Committee and fellow members, in this our final 2010 issue we wish you a Merry Christmas and prosperous New Year.

Barry Stagall

photographs. This issue has nicely filled thanks to a couple of reports and part 2 of Barry White's contribution, based on the Rod Hill web pages, on Australian tree ferns. The FSV is again grateful to Bernadette Thompson for her efficient dealing with the accounts for the year ended 30 June 2010. There was no room for this statement of

The FSV Excursion to Badger Weir Park in August

Barry Stagoll

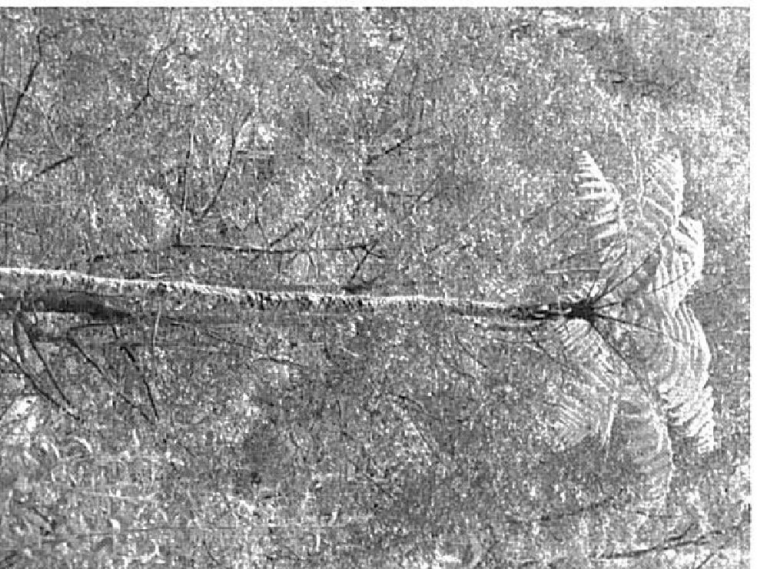
Our efforts to include non-members in the FSV 'Discovering Victorian Ferns' excursion, to view and discuss the many ferns to be found at Badger Weir Park, Healesville on Sunday 19th September, proved quite successful.

We had 16 adult non-members (plus several accompanying children) join a similar number of members at the Park, and we split into three groups to explore along the paths. Six of our visitors were from the Healesville Environment Watch Inc. group, which boosted the numbers on the day, but there were a similar number of non-members who had accepted and were intending to come along who found that they needed to send apologies just prior to or on the day (all wish to be kept advised of future such events, along with nearly 20 others who have also made the same request, having seen our publicity for the Badger Weir excursion). It's pleasing to see that if we go looking in the right places we can attract others to share in enjoyment of ferns and education about them.

And some of those with whom we've made contact through this event have volunteered that they are considering membership of the Society.

During our walks, between us we seem to have found at least 28 species of ferns (the number listed from a 1995 survey of the Park, but the composition slightly changed, this time including a small plant of a species of *Sticherus* (S.

urceolatus) not seen before). And most of us agreed that the highlight is the beautiful large specimen of *Cyathea cunninghamii*, close to the Weir. It must be almost certain that there would be few if any other plants of this species surviving in a natural situation closer to the Melbourne metropolitan area.



Badger Weir Park excursion, August 2010:
Cyathea cunninghamii. Photo: Steve Meacher,
Healesville Environment Watch Inc.

accounts in this issue, but it will be included in the first newsletter for 2011. The forecast this year is for a La Nina weather event, which should mean that the wetter than normal conditions should prevail for a while yet. All to the good for ferns in the bush and in our gardens. I join Barry and the

other committee members in wishing all FSV members, and families and friends, a safe and happy Christmas and New Year.

Rubin Wilson



Miniature ephiphyte *Polyphelebium venosum* on *Dicksonia* trunk, Badger Weir Park excursion, August 2010. Photo: Steve Meacher of Healesville Environment Watch Inc.

Boolarra Plants

Gippsland Fern Specialists

Specialising in tree ferns, ground ferns, stag ferns, elk ferns, landscape ferns, water features

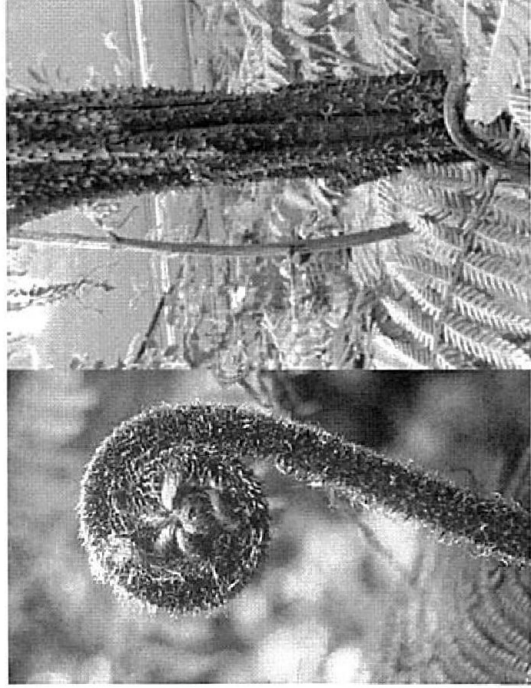
Retail and wholesale

55 Tarwin St Boolarra

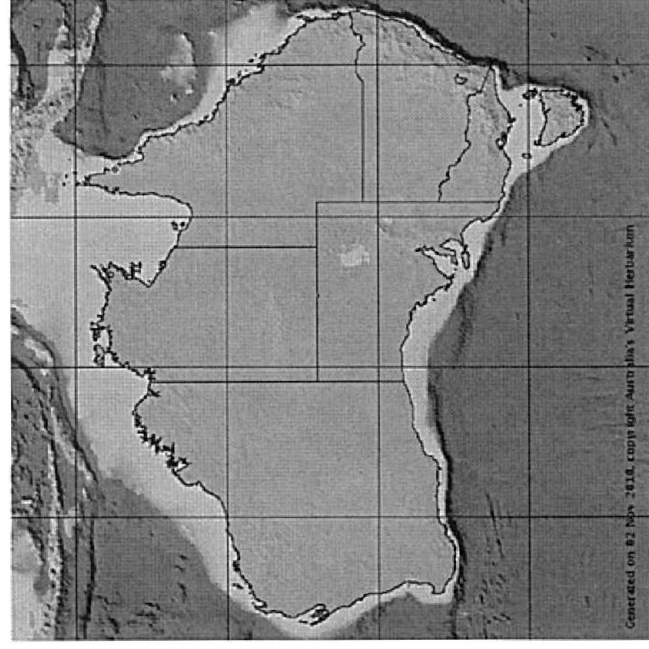
Ph/Fax: (03) 51 696 355

Australian Tree Ferns part 2 (continued)

Cyathea exilis Tree fern to 4 metres high, 4-8 cm diameter; bi-pinnate to pinnatifid fronds, stipe bases up to 25 cm with long blunt spines. It has a bud at each stipe base giving rise to offsets and is endemic to Cape York, known from only one vine-forest area of about 100 hectares.



Cyathea exilis left, crozier, right, trunk



Cyathea exilis distribution



Left: a tiny helmet orchid on *Dicksonia*, Badger Weir Park excursion, August 2010; right: a fern community growing on and around ancient *Dicksonias*, including *Rumohra adiantiformis*, *Lastreopsis acuminata* and *Blechnum chambersii*. Photos: Steve Meacher, Healesville Environment Watch Inc.

Ferns in the Melbourne Botanic Gardens

Barry White

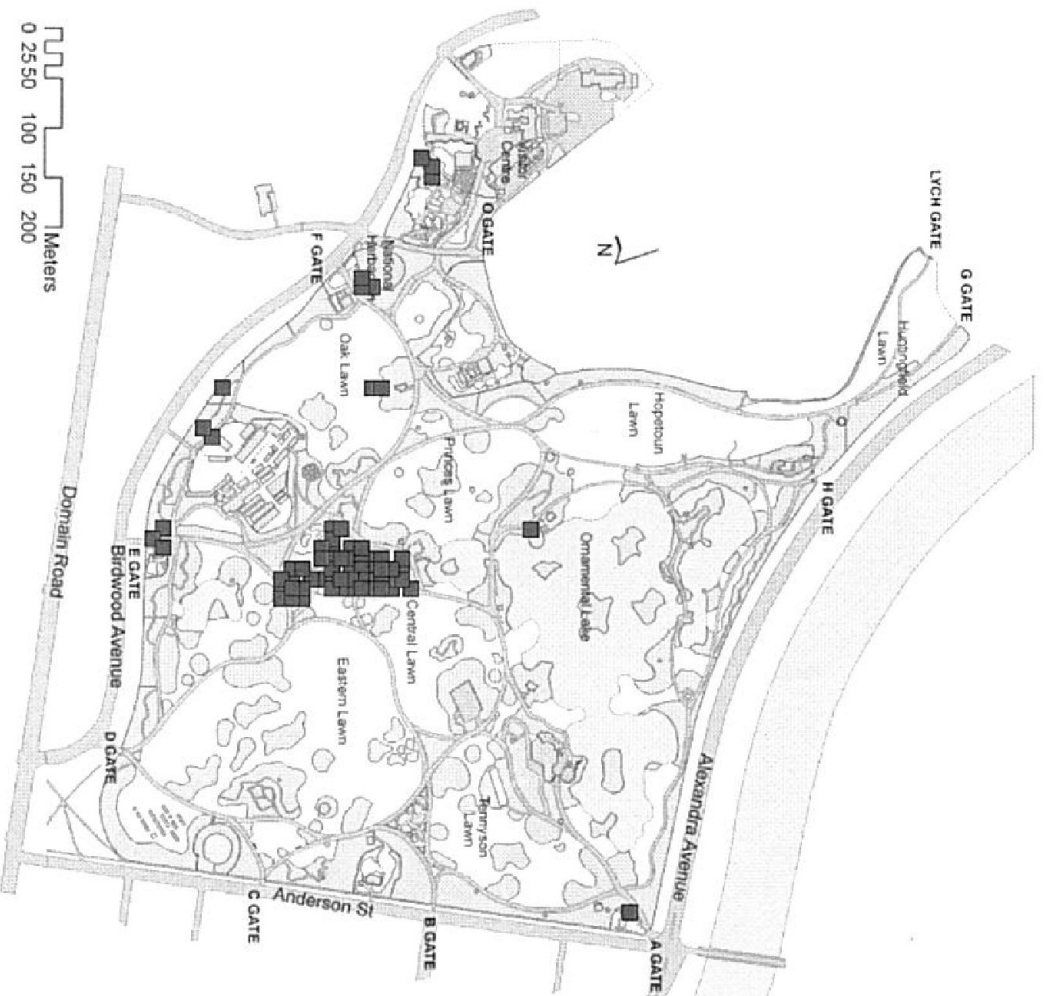
Are you visiting the Melbourne Botanic Gardens? Interested in seeing particular ferns? Then the web site below will help guide you to the right spot. The types of ferns present in the Garden and their location is now readily available through the web site

<http://www.rbga.vic.gov.au/dbpages/rbgcensus/index.php>.

All ferns (and other plants) are listed together with their accession number and the garden bed in which they are located. There is also a map showing the location for each fern and buttons to click to connect to other websites for further information. There is a surprising number of ferns

listed including 275 *Cyathea* plants; the vast majority are *Cyathea australis* but other species listed include *Cyathea australis* subsp. *norfolkensis*, *C. brownii*, *C. cooperi* (including the black and the glaucous forms), *C. dealbata*, *C. leichhardtiana*, *C. integra*, *C. macarthurii*, *C. robusta*, *C. medullaris*, *C. integra*, *C. lunulata*, *C. x marcescens* and quite a lot just listed as *Cyathea* sp.

Below is a map showing locations of *Cyathea australis* (Little squares)



Australian Tree Ferns part 2 (continued)



Australia's original liquid SEAWEED plant food concentrate

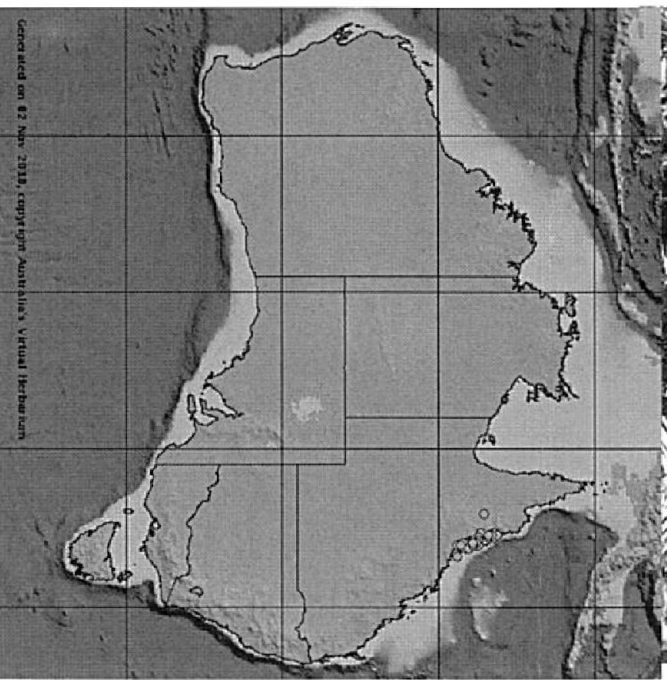
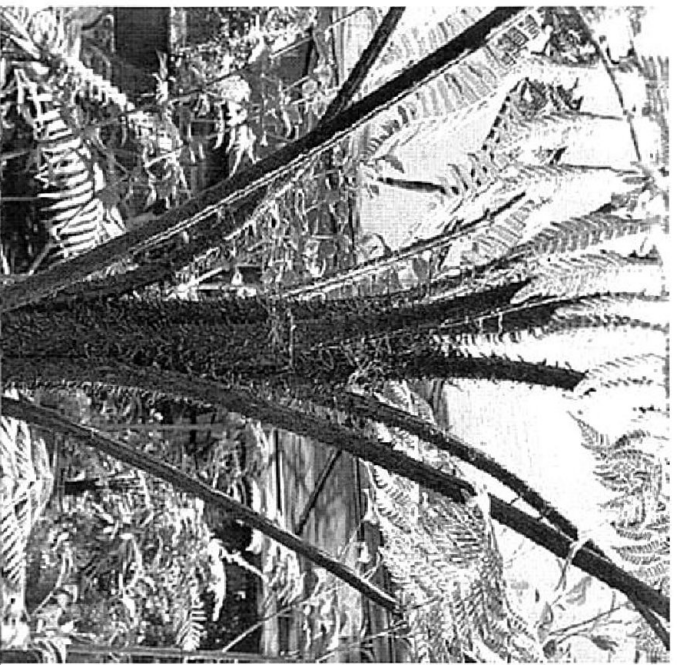
- Stimulates vigorous root development
- Builds resistance to insect and fungal attack
- Enhances fruit and flower formation
- Non-burning, easy to use on all plants
- Minimise transplanting shock
- Harden plants during periods of stress



next column, *Cyathea felina* trunk and distribution

Cyathea felina Tree fern to 8 metres tall and to 20 cm diam. Stipe bases deciduous, warty, to 1 m long; basal scales similar in structure to those of *C. cooperi* but usually paler. Lamina about 3 m long; largest pinnae to 75 cm long; basal pinnae only slightly reduced; pinnules to 12 cm long, to about 2.5 cm wide. In Australia, restricted to Eastern Cape York Peninsula, Qld; also in Moluccas, New Guinea and Louisiade Archipelago. Grows in vine-forest or more open wet areas

(continued next page)



Generated on 82 Nov 2019, Copyright Australia's Virtual Herbarium

Australian Tree Ferns - part 2

The information and images below have been compiled by Barry White, largely from Rod Hill's web pages which unfortunately are no longer available. Rod was one of the foundation members of the Fern Society of Victoria. The distribution maps are derived from Australia's Virtual Herbarium (<http://www.ersa.edu.au/avh/>). For those maps, intellectual property rights, including copyright in the data, are retained by the Council of Heads of Australasian Herbaria Inc., on behalf of the contributing herbaria. Specimen data reproduced from Australia's Virtual Herbarium with permission of the Council of Heads of Australasian Herbaria Inc.

The Editor

Cyathea cooperi Up to 12 metres tall, a tall robust treefern of both lowlands (including coastal) & mountains, usually found close to creeks, often



Cyathea cooperi

with the crown in full sun, seldom forms extensive stands. It occurs on east coast & mountains from central New South Wales to North Queensland (shown below in the 'Moss Garden' in Carnarvon Gorge - inland central Queensland). It has distinctive coin-spot trunk, diameter varying considerably, large sori, crowded, virtually covering the underside of fertile fronds. Croziers covered in a mixture of long pale scales (more abundant on crown and stipe base) and shorter rusty-red scales. This is a very variable species with many different forms, some of which are very close to *Cyathea brownii* from Norfolk Is. It is especially hardy in cultivation.

Austral Ferns

Wholesale Propagators

Phone (03) 5282 3084

Specialising in supplying retail nurseries with a wide range of hardy ferns; no tubes.

Fern Acres Nursery

Retail

Specialising in elks, stags, bird's nest ferns, native epiphytic orchids, species and hybrids

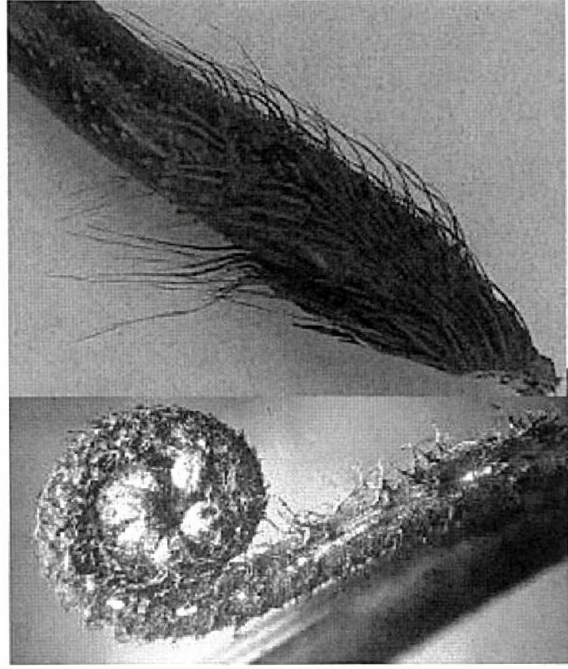
1052 Whittlesea-Kinglake Road,
Kinglike West
Melway 510 N11

Ph/Fax: (03) 5786 5031

For full list and photos:

Web: www.fernacres.com.au
or: www.ferns.com.au

Australian Tree Ferns part 2 (continued)



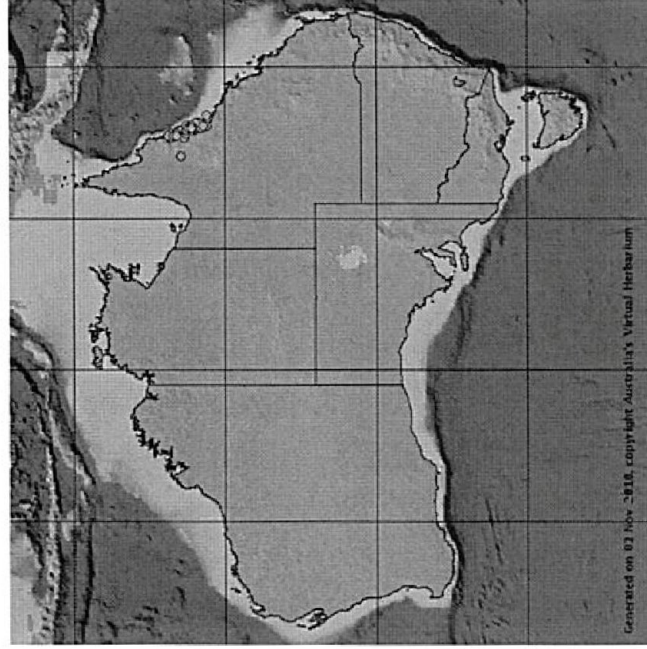
Cyathea woollsiana left, crozier, right, stipe base

pale hairs, membranous indusium. Distinctive unfurling frond (also found in *Cyathea leichhardtiana*) with pinnules remaining like rows of beads, only uncurling when the rest of the frond is fully extended. Rare fern of NE Queensland (also Malaysia).



Cyathea celebica left, frond, right, trunk

(continued next page)



Cyathea woollsiana distribution

Cyathea celebica Tree fern to 7 metres high with a trunk to 30 cm diameter. Croziers with long pale scales and beneath this a covering of fine dark scales, underside of frond covered with a mat of very fine

The Bush House Nursery

Wholesale and retail



Visitors welcome

Lorraine Deppeler

Phone: (03) 5565 1665

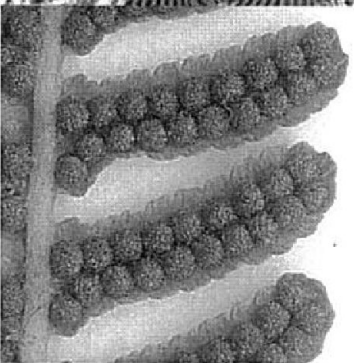
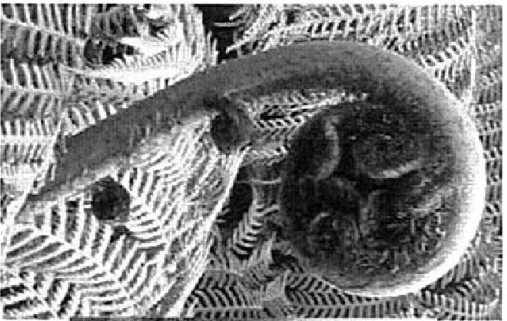
Fax: (03) 5565 1656

18 Hermitage Drive

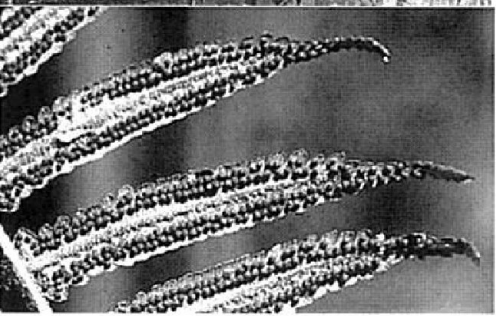
Allansford 3277

Web: www.bushhousenursery.com.au

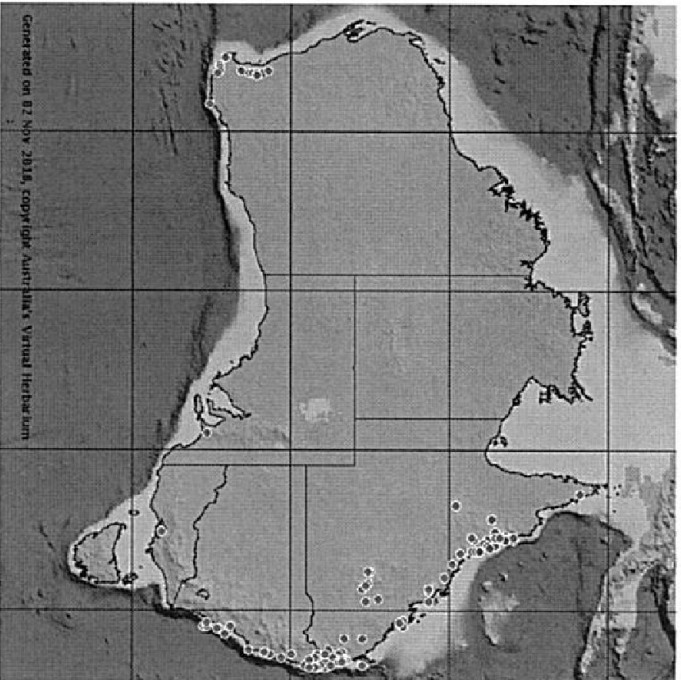
Australian Tree Ferns part 2 (continued)



Cyathea cooperi left, crozier, right, fertile pinnae

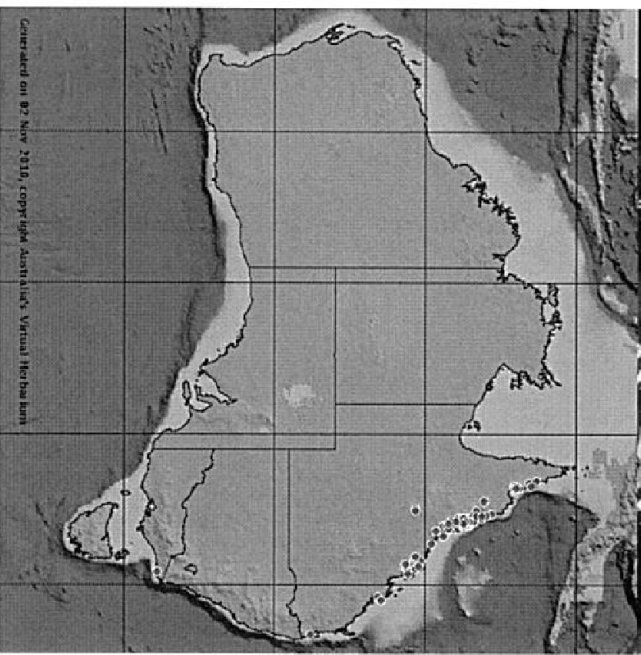


Cyathea rebeccae above left, in natural habitat, above right, fertile pinnae, below, frond detail



Cyathea cooperi distribution

Cyathea rebeccae (Black Tree Fern) Up to 7 metres tall; it has shiny, dark green, bipinnate fronds similar to *C. baileyana*; slender, untidy trunk up to 10cm diameter, stipe bases persistent, suckers from base, often forms extensive stands in lowland rainforest along the east coast from central to northern Queensland, also Malaysia; sori without indusium.

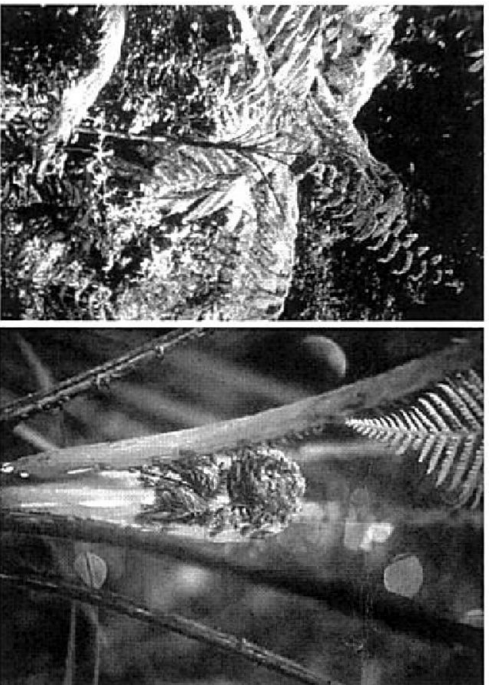


Cyathea rebeccae distribution

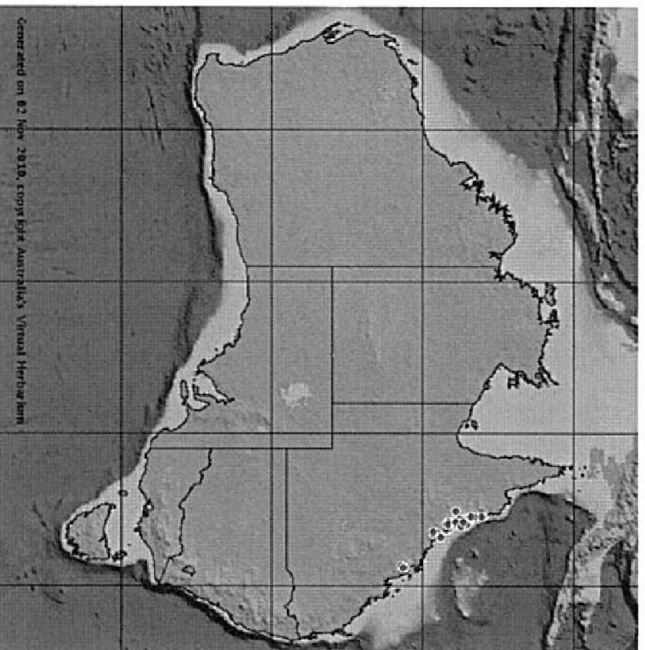
(continued next page)

Australian Tree Ferns part 2 (continued)

Cyathea robertsiana Tree fern to 7 metres high with a thin trunk which may be up to 10 cm diameter; the trunk has a neat pattern of oval leaf scars; almost round flat scales on croziers, crown light green and naked except for scales on croziers, indusium on inner side of sorus, small, pale, thin. It is a mountain rainforest species of NE Queensland.

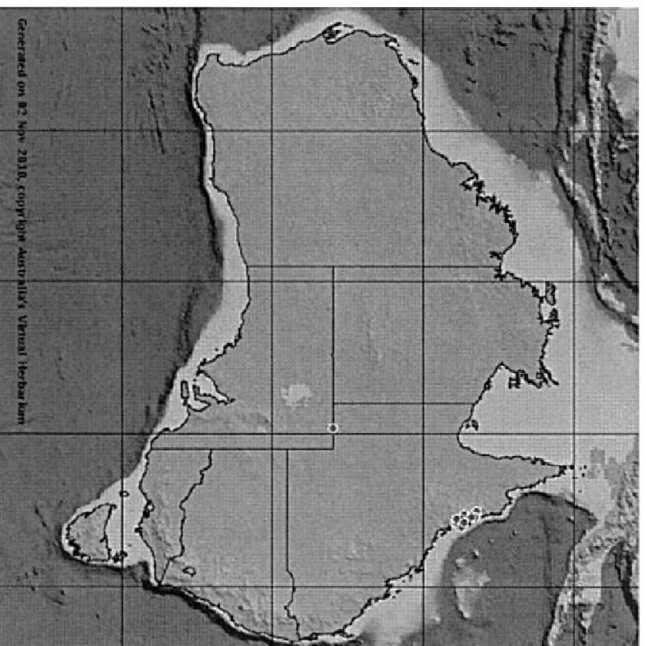


Cyathea robertsiana left, in natural habitat, right, crozier detail



Cyathea robertsiana distribution

Cyathea baileyana (Wig Tree Fern) Tree fern to 5 metres high, trunk 10 cm diameter; bi-pinnate, the basal pinnae are completely skeletonised forming a "wig". Sori are exindusiate in 1-3 irregular rows. Stipe bases persistent densely covered with scales which are very variable in size up to 25 mm long. It occurs in NE Queensland in wet gullies.



Cyathea baileyana distribution

Cyathea woolfsiana Tree fern to 7 metres high with trunk to 15 cm diameter; the base of stipe is green, especially obvious while frond is unfurling, frond light green, pinnae opposite, pinnules fairly thin. Stipe base is covered with abundant deciduous long dark scales but also persistent long curved erect bristle-like 'scales'. Fairly slender untidy trunk, sori quite small, indusium brown, semi-circular, entirely on inner side of sorus. It occurs in NE Queensland in moist gullies.

(continued next page)